

MEYER ESTATES AND MEYER MOBILE MANOR

HANSON GRANT, MARTIN COUNTY FLORIDA

MOBILE HOME GARDENS
(UNRECORDED)

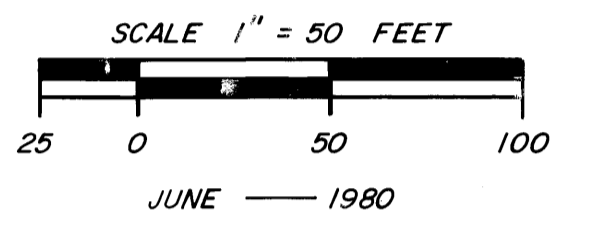
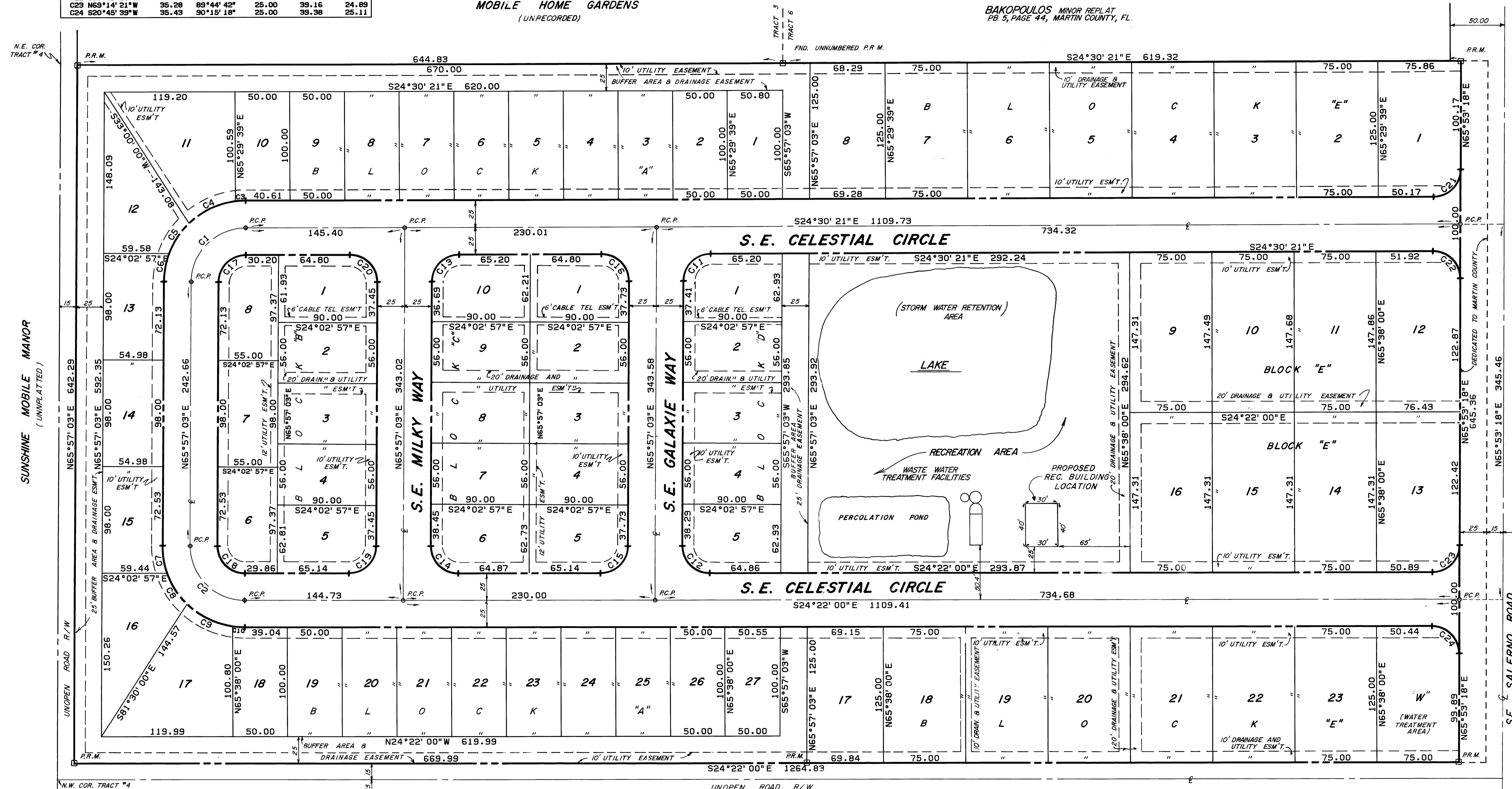
BAKOPOULOS MINOR REPLAT
PB 5, PAGE 44, MARTIN COUNTY, FL.

CLERK'S RECORDING CERTIFICATE

I, LOUISE V. ISAACS, CLERK OF THE CIRCUIT COURT OF MARTIN COUNTY, FLORIDA,
HEREBY CERTIFY THAT THIS PLAT WAS FILED FOR RECORD IN PLAT BOOK 8,
PAGE 60, MARTIN COUNTY, FLORIDA, PUBLIC RECORDS, THIS DAY OF JUNE, 1980.

LOUISE V. ISAACS, CLERK
CIRCUIT COURT
MARTIN COUNTY, FLORIDA
BY:
DEPUTY CLERK

NO	BEARING	CHORD	DELTA	RADIUS	LENGTH	TAN
C1	S69°15'39"E	70.43	89°32'36"	50.00	78.14	49.60
C2	N20°47'31"E	70.31	90°19'03"	50.00	78.82	50.28
C3	S28°06'03"E	9.41	7°11'23"	75.00	9.41	4.71
C4	S48°54'05"E	46.86	36°24'42"	75.00	47.56	24.67
C5	S80°53'20"E	33.44	25°45'48"	75.00	33.72	17.15
C6	N76°02'24"E	26.28	20°10'43"	75.00	26.41	13.35
C7	N56°01'35"E	25.85	19°50'55"	75.00	25.98	13.12
C8	N39°04'41"E	39.80	26°02'53"	75.00	34.10	17.35
C9	N62°02'45"E	46.37	36°00'53"	75.00	47.15	24.38
C10	N20°09'52"W	10.99	8°24'16"	75.00	11.00	5.51
C11	S69°15'39"E	35.21	89°32'36"	25.00	39.07	24.80
C12	N20°47'31"E	35.45	90°19'03"	25.00	39.41	25.14
C13	S69°15'39"E	35.21	89°32'36"	25.00	39.07	24.80
C14	N20°47'31"E	35.45	90°19'03"	25.00	39.41	25.14
C15	N69°12'29"W	35.26	89°40'57"	25.00	39.13	24.86
C16	S20°43'21"W	35.50	90°27'24"	25.00	39.47	25.20
C17	S69°15'39"E	35.21	89°32'36"	25.00	39.07	24.80
C18	N20°47'31"E	35.45	90°19'03"	25.00	39.41	25.14
C19	N69°12'29"W	35.26	89°40'57"	25.00	39.13	24.86
C20	S20°43'21"W	35.50	90°27'24"	25.00	39.47	25.20
C21	N69°18'31"W	35.23	89°36'21"	25.00	39.10	24.83
C22	S20°41'29"W	35.48	90°23'39"	25.00	39.44	25.17
C23	N69°14'21"W	35.28	89°44'42"	25.00	39.16	24.89
C24	S20°45'39"W	35.43	90°15'18"	25.00	39.38	25.11



- NOTES:**
- 1) NO LOT SPLITS EXCEPT TO CREATE LARGER LOTS
 - 2) NO DIRECT LOT ACCESS FROM S.E. SALERNO RD
 - 3) LOT "W" MAY NOT BE IMPROVED FOR RESIDENTIAL USE UNTIL SUCH TIME AS THE SUBDIVISION IS SUPPLIED WITH POTABLE DRINKING WATER FROM A SOURCE OTHER THAN THE WELL ON LOT "W"

HIBISCUS PARK
SECTION 3
PB 3, PAGE 53,
MARTIN COUNTY, FL.

MATHERS & ASSOCIATES
ENGINEERING · SURVEYING
STUART, FLORIDA

TRACT 1 TRACT 8
BLOCK 69 BLOCK 69
MARTIN MEADOWS PHASE I
PB 8, PAGE 39, MARTIN COUNTY, FL.